

G1024F

24 -Port Gigabit Switch with 2 combo SFP Slots

G1024F

24 -Port Gigabit Switch with 2 combo SFP Slots

Products Description

G1024F is a green energy-conservation layer2 Unmanaged switch . It is specially designed to build a fast, convenient and easy-maintained wired access network. it provides 24 10/100/1000Mbps RJ45 ports and 2 Combo Gigabit SFP uplink ports. The unique one-button switchover design supports four modes, which can effectively deal with various complex network environment. G1024F apply with the world's leading chipset vendor Marvell solution, which brings a strong switch performance. The all-steel-shell body improves the heat dissipation and ensures the stability. Professional port and power supply lightning-proof enables to reduce the damage of severe weather. It supports full wire-speed non-blocking forwarding and port auto-flip. With high enterprise-level art, it is the ideal solution to build your gigabit wired access network (SMBs, hotels, Video Surveillance).



- 24 10/100/1000Mbps RJ45 ports, 2 combo Gigabit SFP slots
- 19-inch rack-mountable, 1U steel case
- Plug and play, Without configuration

Key Feature

- Compliant with IEEE802.3, IEEE802.3u, IEEE802.3x, IEEE802.3ab
- Store & forward, share memory, non-blocking architecture
- Supports MAC address self-learning and auto MDI/MDIX
- Provide 24 10/100/1000Mbps auto-negotiation ports, 2 Gigabit combo SFP slots
- Supports full-duplex 802.3x flow control and half-duplex backpressure flow control
- Supports 8K MAC address list, MAC address learning and auto-ageing
- Inductive Lightning Protection up to 6KV for power supply and all ports
- Built-in switching power adapter, support AC 100-240V 50/60Hz input
- 4 Network Modes(Standard, Flow Control, Link aggregation, Port VLAN)
- Standard 19-inch rack-mountable, 1U steel case
- Plug and play, no need configuration

Product Features



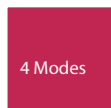
Multiple and flexible ports

Provide 24 10/100/1000M auto-negotiation RJ45 ports, 2 combo Gigabit SFP slots. All ports have the wire-speed forwarding capability and support IEEE 802.3x full-duplex flow control and half-duplex backpressure Flow control. The multiple ports provide great flexibility for users to build networks and allow users to quickly build all kinds of wired networks.



Excellent Lightning-Proof design

Integrated professional lightning-proof circuit which supports power supply and all ports lightning-proof (common mode protection 6KV). Effectively reduce the damage to the network system caused by the thundery weather.



4 network Modes

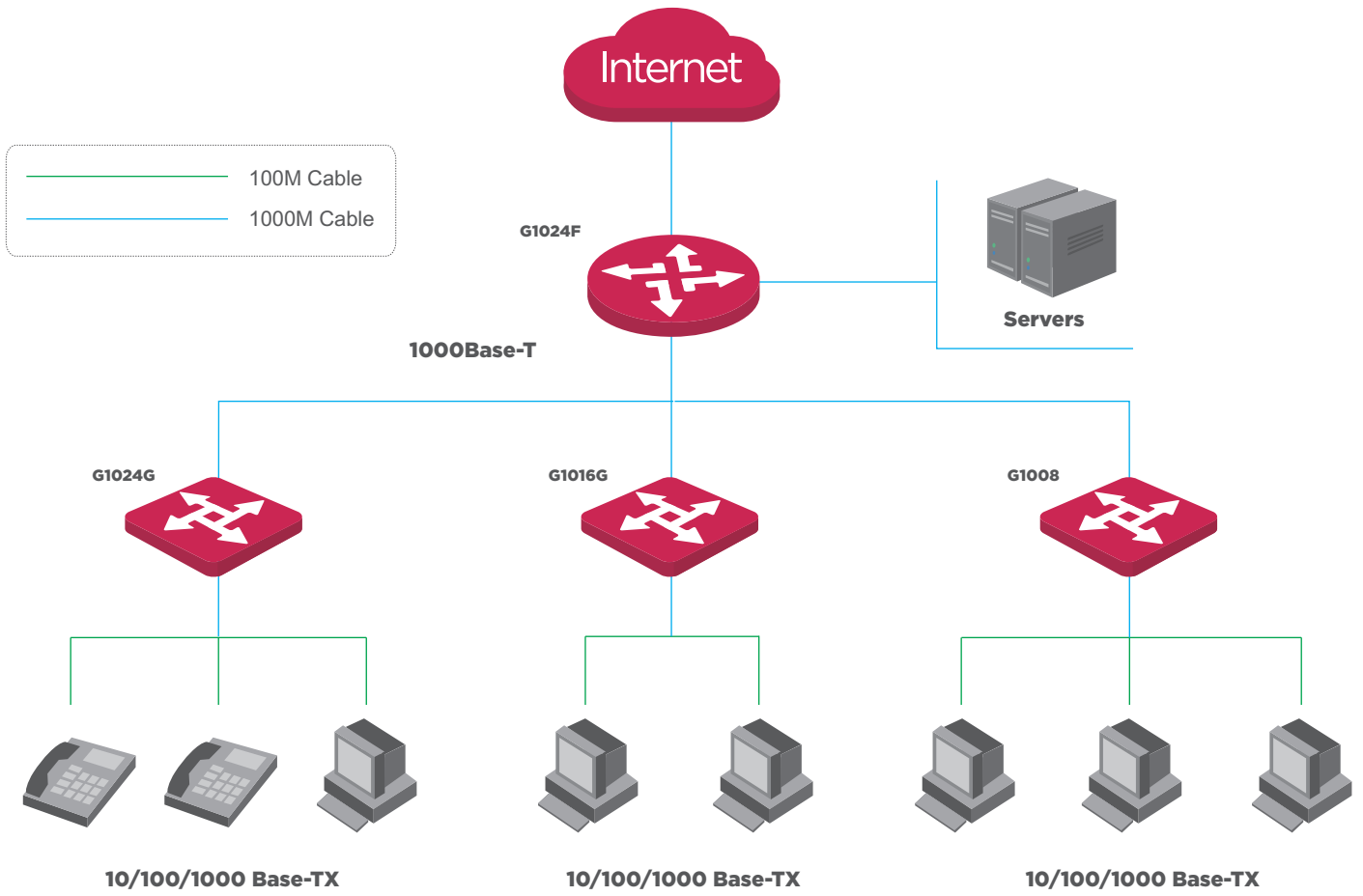
The unique one-button switchover design supports four modes: Standard (M1), Flow control (M2), Link aggregation (M3) and Port VLAN (M4), which can effectively deal with various complex network environment.



Easy to use

Plug-and-play, which helps you quickly build Gigabit wired network and greatly simplify the management and maintenance of equipment, It supports desktop and standard 19-inch rack mounted installation with two pairs of rack-mounted hangers, which can be easily installed in a standard 19-inch machine room cabinet.

Application Scenarios



Product Model		G1024F
Hardware Features		
Standards&Protocols	IEEE 802.3、 IEEE 802.3u、 IEEE 802.3z、 IEEE 802.3ab、 IEEE 802.3x、 IEEE 802.3ad	
Interface	24*10/100/1000Mbps RJ45 Ports, 2 Gigabit combo SFP slots (Auto Negotiation/Auto MDI/MDIX)	
Transfer Method	Store-and-Forward	
Switching Capacity	48Gbps	
Packet Forwarding Rate	35.7Mpps	
Address Table	8K	
Power Consumption	<20W	
Power input	100-240VAC, 50/60Hz	
Dimension (L×W×H)	440mm*178mm*44mm	
Fan Quantity	Fanless	
Environment	Operating Temperature:: 0°C~40°C Storage Temperature: -40°C~70°C Operating Humidity: 10%~90% non-condensing Storage Humidity: 5%~90% non-condensing	
Software Features		
Port Feature	IEEE802.3x flow control (full duplex)	
4 Network Modes	<p>M1: Standard the switch functions as a standard gigabite basic switch, and could be used as a core switch, which is suitable for gigabite network extension in small offices.</p> <p>M2: Flow control Dedicated for cyber bars and education institutes, the 10/100/1000Mbps auto-negotiation mode can effectively solve slowness issue when cloning network.</p> <p>M3: Link aggregation Dedicated for networking in SMEs. Port 15 and Port 16 are grouped as a single one (source MAC + destination MAC, static trunking) to increase uplink bandwidth so as to break the uplink bottleneck and prevent data congestion.</p> <p>M4: Prot VLAN Dedicated for video surveillance, wired/wireless networking. Mutually isolated with each other, 1-22 ports could only communicate with the 23th and the 24th ports separately, thus preventing broadcast storm, ARP virus, and DHCP spoofing, as well as improving the intranet's transmission rate and security.</p>	

IP-COM
World Wide Wireless

Headquarters

IP-COM Networks Co.,Ltd.

Tel: +86 755-27653089

Fax: +86 755-27657178

Email: marketing@ip-com.com.cn

Website: www.ip-com.com.cn

ADD: Tower E3, No1001, Zhongshanyuan Road, Nanshan District, Shenzhen, China.

Copyright 2017 IP-COM Networks Co.,Ltd. All Rights Reserved

